

# ARLBERG SHUTTLE

## Airport - Bus 2009/2010

Welcome on board on our shuttle bus from  
Friedrichshafen Airport to the Arlberg region!

Please find below our timetable:

*timetable valid from 12. December 09 - 18. April 2010*

<b>arrival FDH Airport:</b>	<b>Ryanair</b>	<b>09:40 h</b> FR 2001	<b>13:55 h</b> FR 2008	<b>16:45 h</b> 24.12 + 31.12
<b>departure:</b>	<b>Airport</b>	Bus 1 / 10:15 h	just Saturday Bus 2 / 14:30 h	Bus 3 / 17:15 h
ZÜRS bus stop post office		12:15 h	16:30 h	19:15 h
LECH bus stop post office		12:30 h	16:45 h	19:30 h
ST. ANTON train station		12:50 h	17:05 h	19:50 h
<b>departure FDH Airport:</b>	<b>Ryanair</b>	<b>10:05 h</b> FR 2002	<b>14:20 h</b> FR 2009	<b>17:10 h</b> 24.12 + 31.12
<b>departure:</b>	<b>Arlberg</b>	Bus 1	just Saturday Bus 2	Bus 3
ST. ANTON train station		05:30 h	09:30 h	12:30 h
LECH bus stop post office		05:55 h	09:55 h	12:55 h
ZÜRS bus stop post office		06:10 h	10:10 h	13:10 h
FDH airport		08:15 h	12:15 h	15:15 h

**Our shuttle bus is connected to all RYANAIR flights from London Stansted**

**Informations:**

FR 2001 + FR 2002: Tuesday, Thursday, Saturday, Sunday  
FR 2008 + FR 2009:  
Saturday

**Prices:**

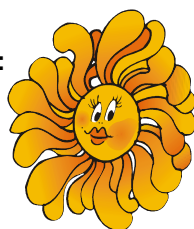
	single	return
Tuesday + Thursday	€ 60.00	€ 115.00
Friday + Sunday	€ 40.00	€ 75.00
Saturday	€ 35.00	€ 65.00

children up to 15 years 50 % off

**reservations:**

pre reservations are necessary 2 days in advance

**Contact:**



E-mail: [info@mytransfer.at](mailto:info@mytransfer.at)

Tel.: +43 664 518 7040

[www.mytransfer.at](http://www.mytransfer.at)

operated by **LOACKER TOURISTIK GMBH, Bundesstr. 17, A - 6842 Koblach**